

Figure 1

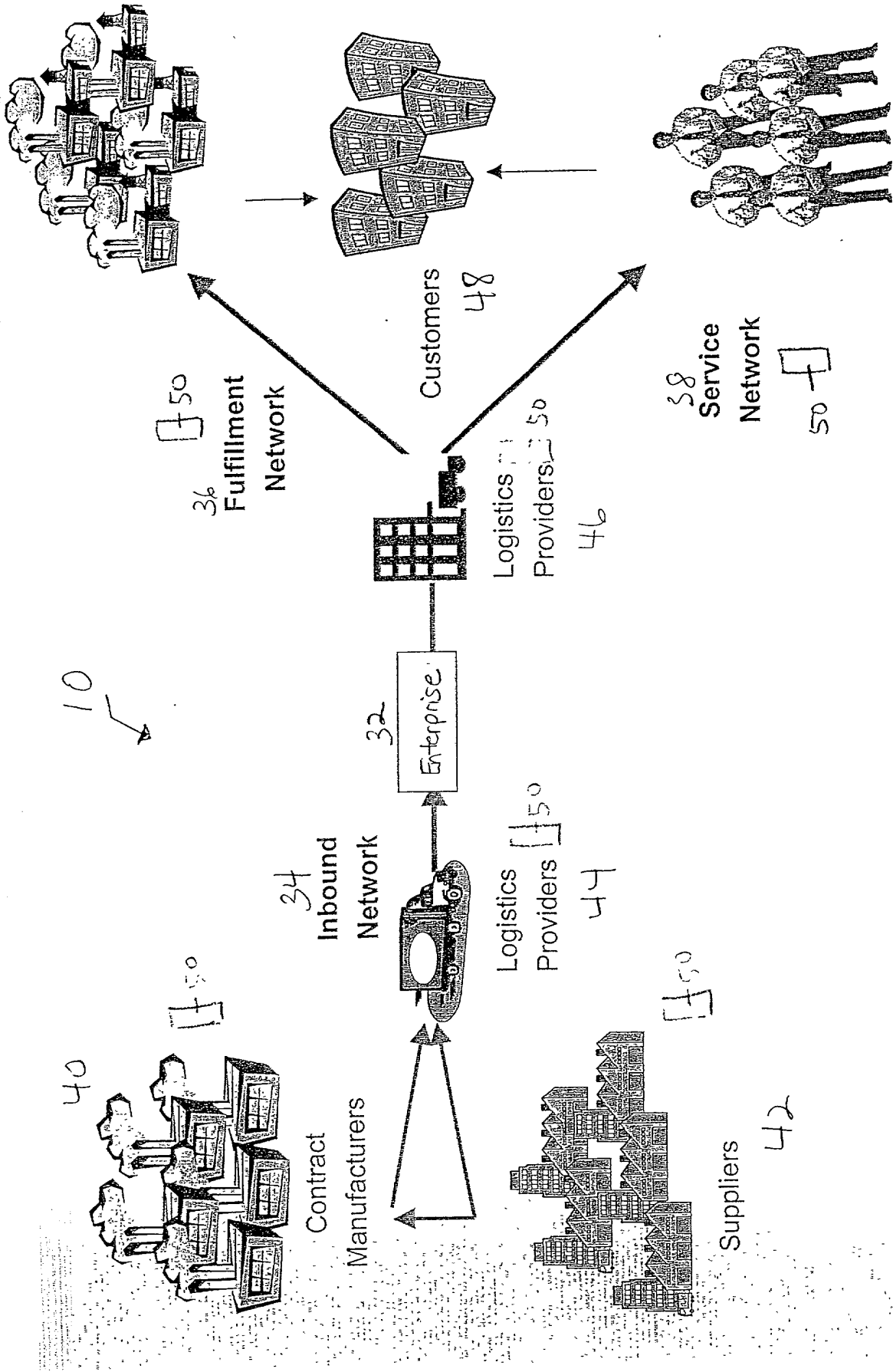


Figure 2A

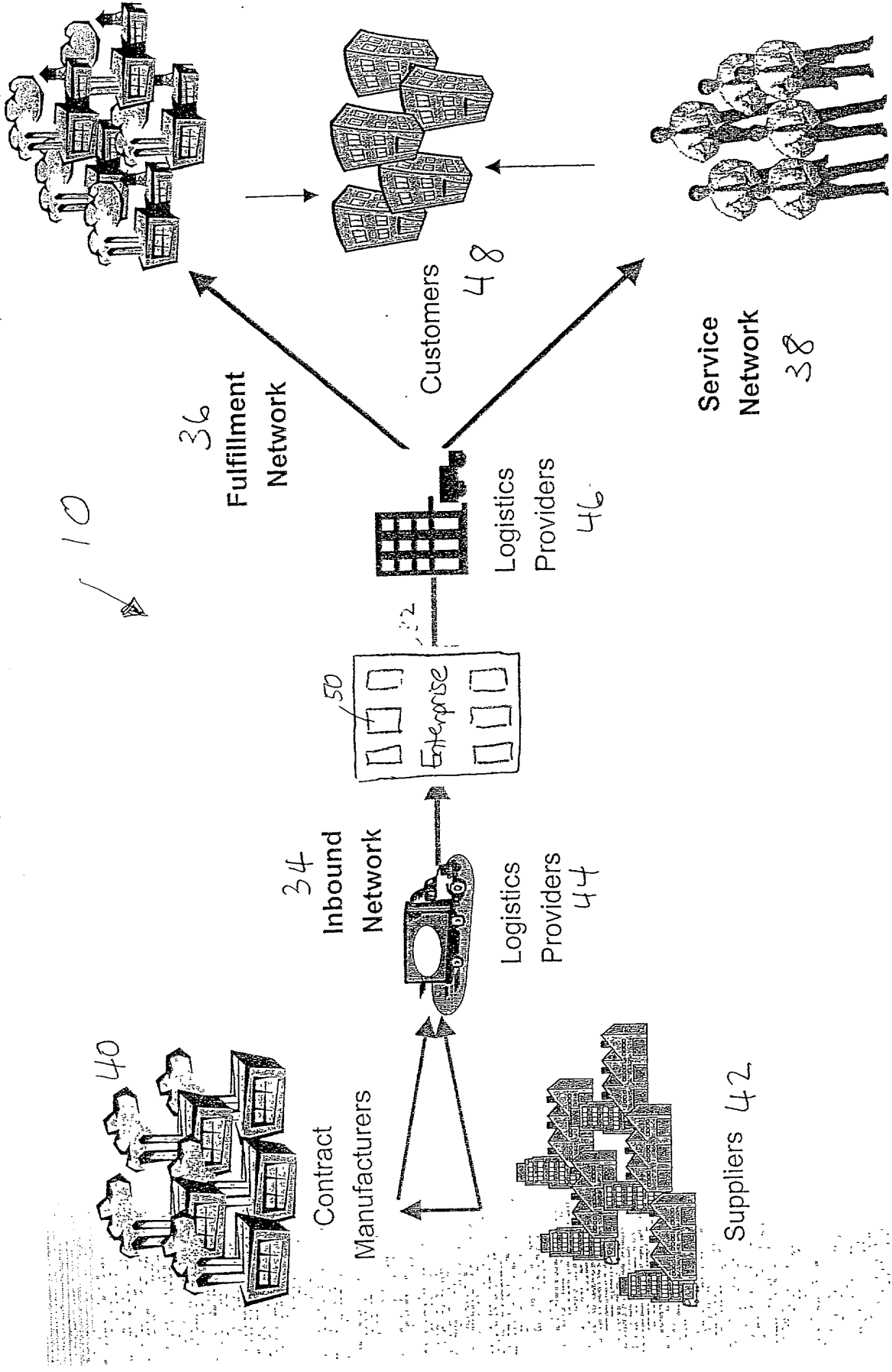
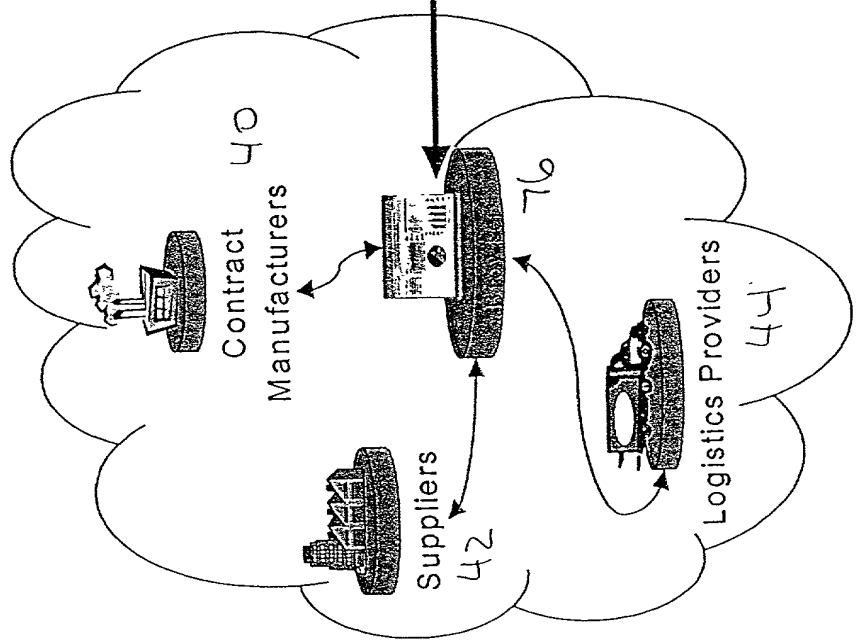
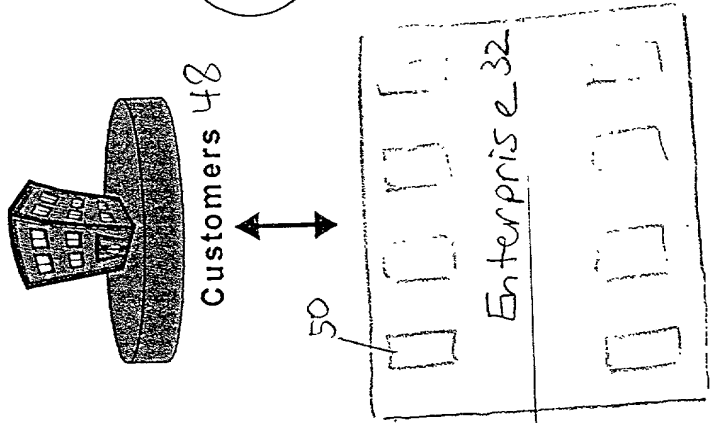
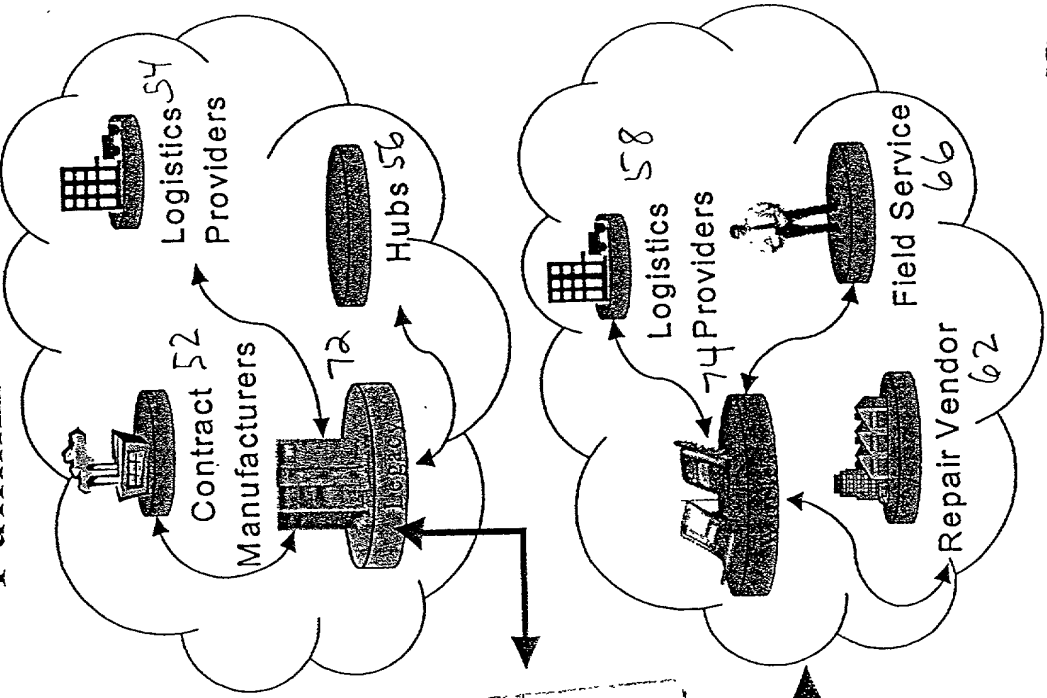


Figure 2B

✓ 10

36

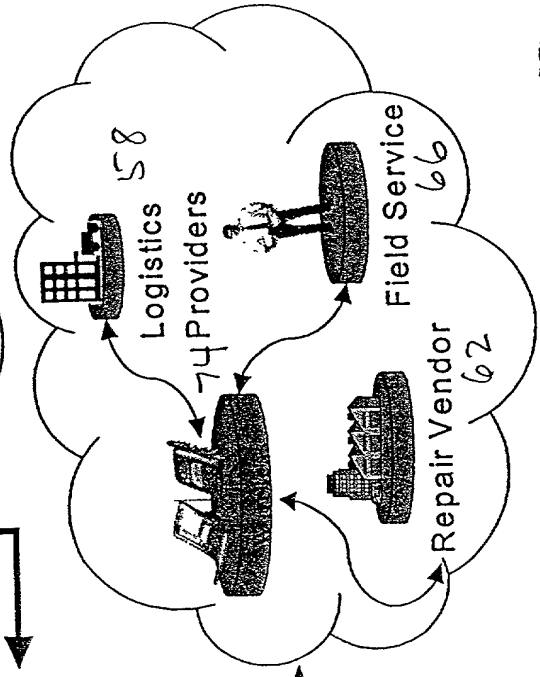
Fulfillment Network



Inbound Network 34

Figure 3

Service Network 38



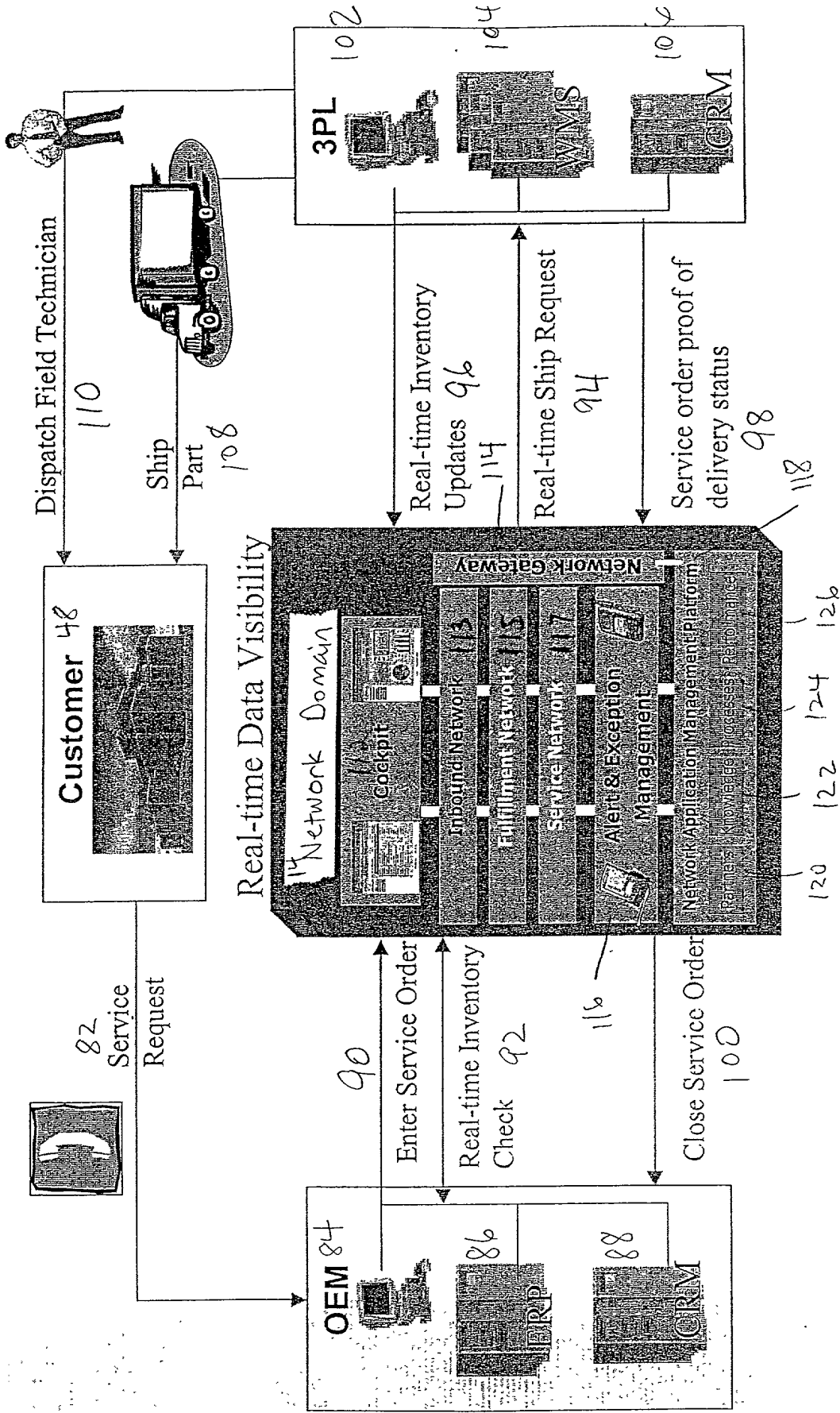


Figure 4

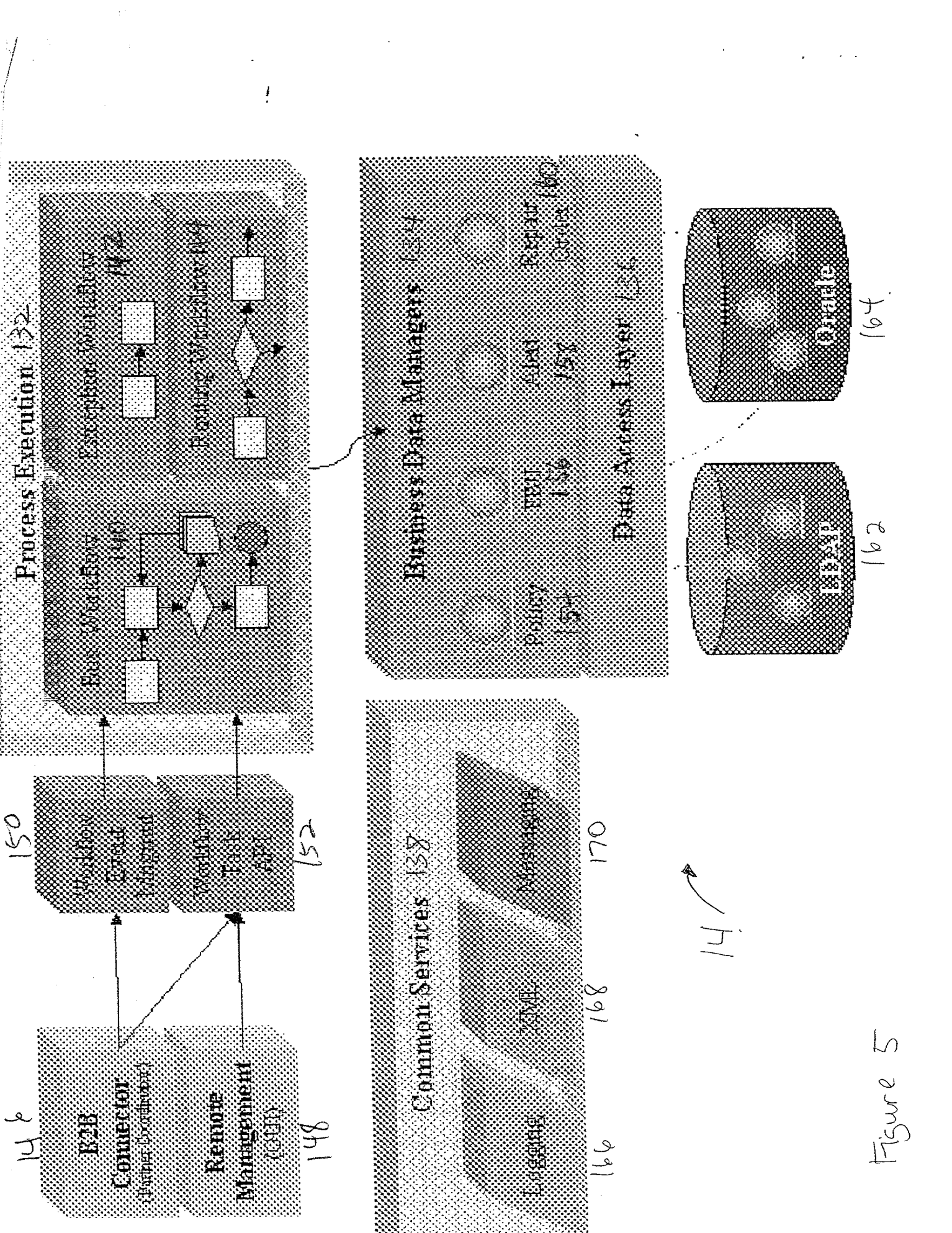


Figure 5

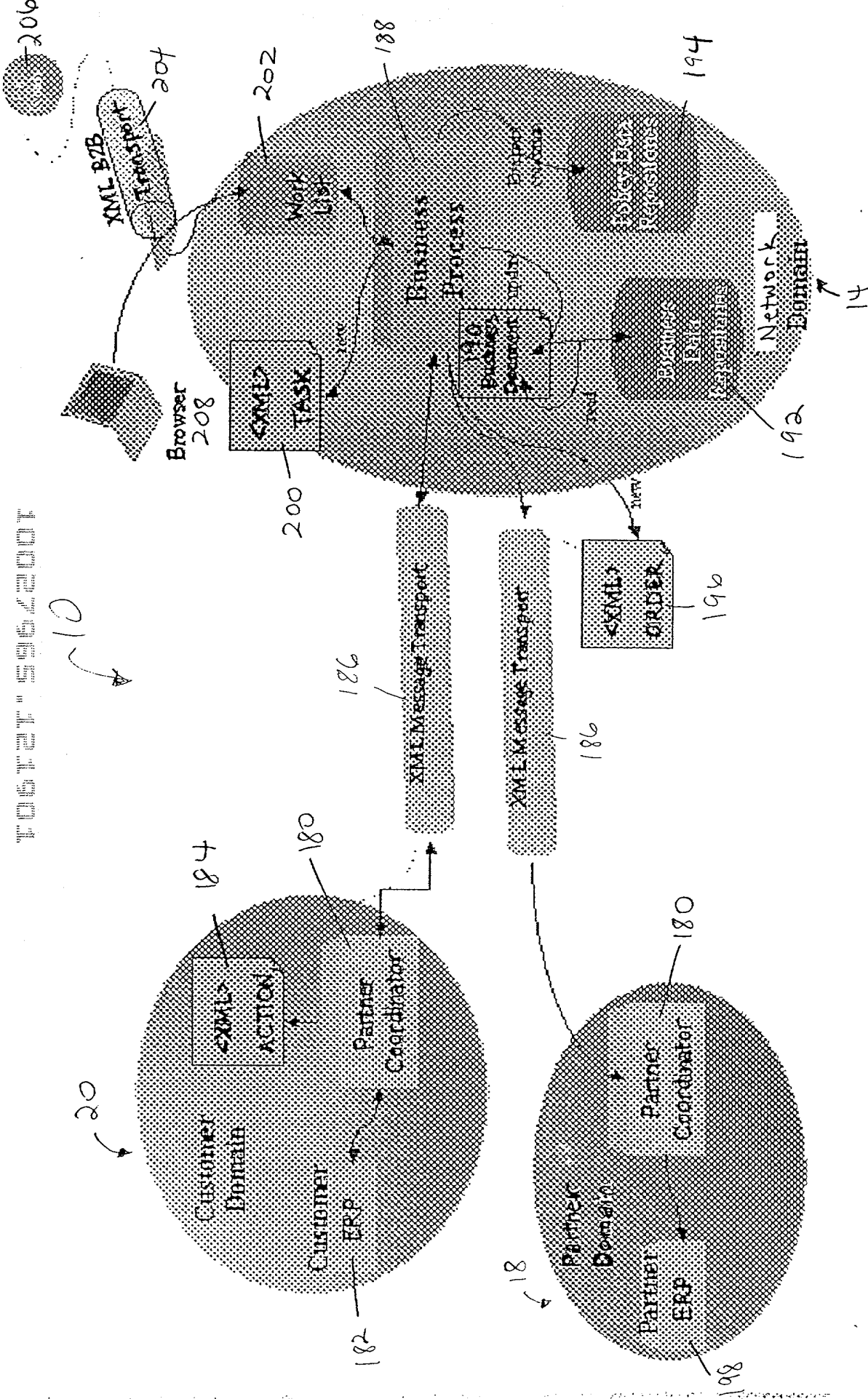


Figure 6

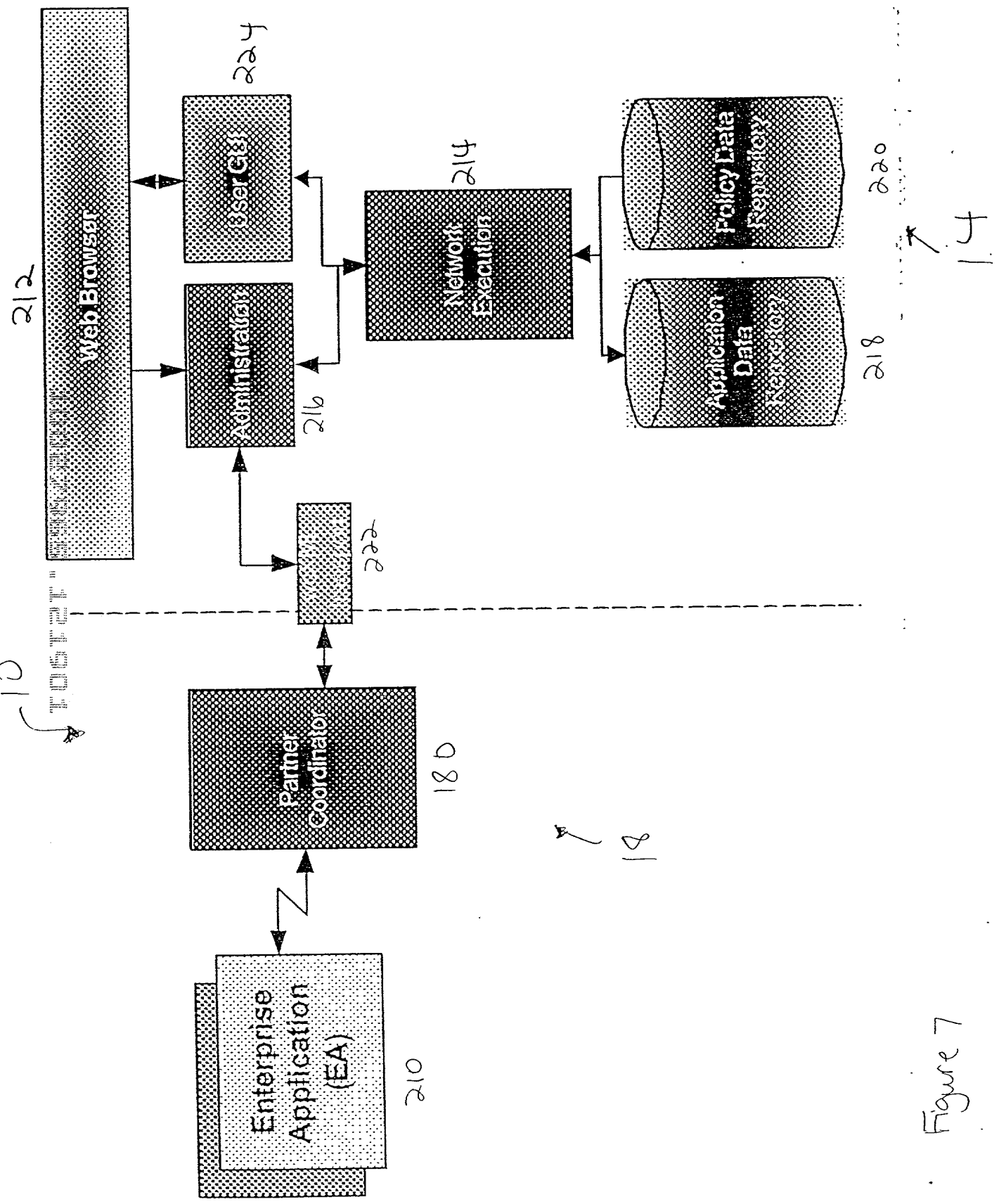


Figure 7

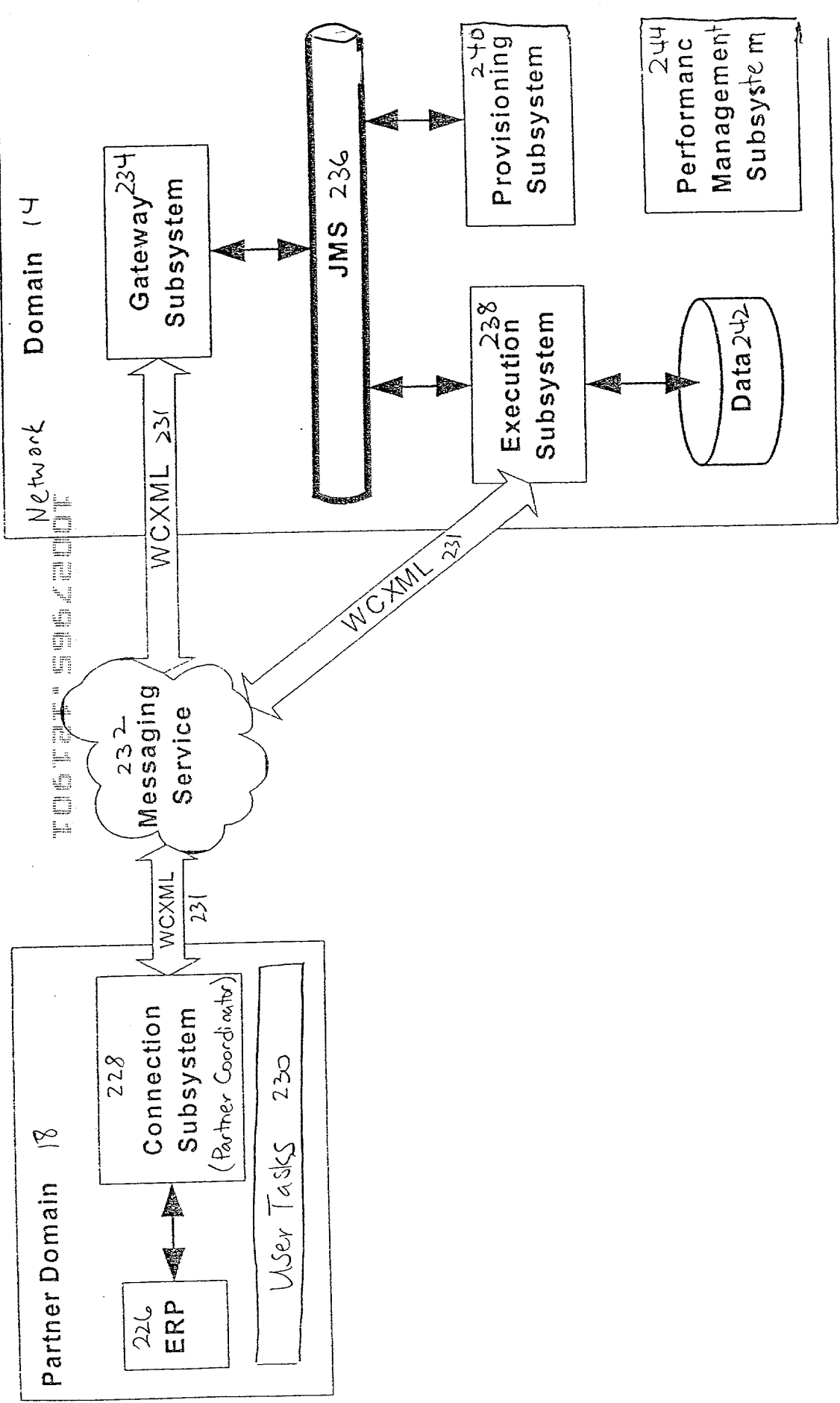


Figure 8

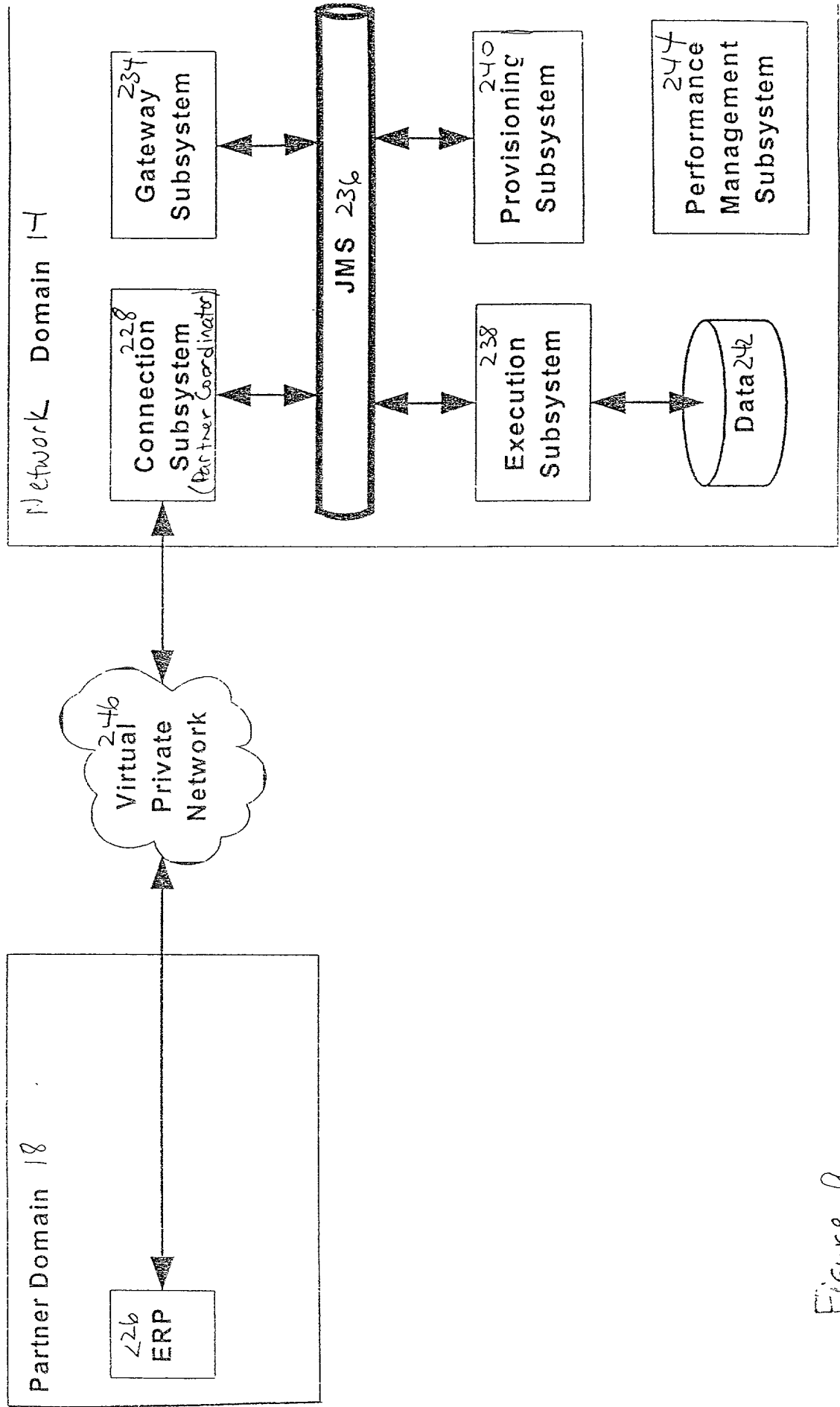


Figure 9

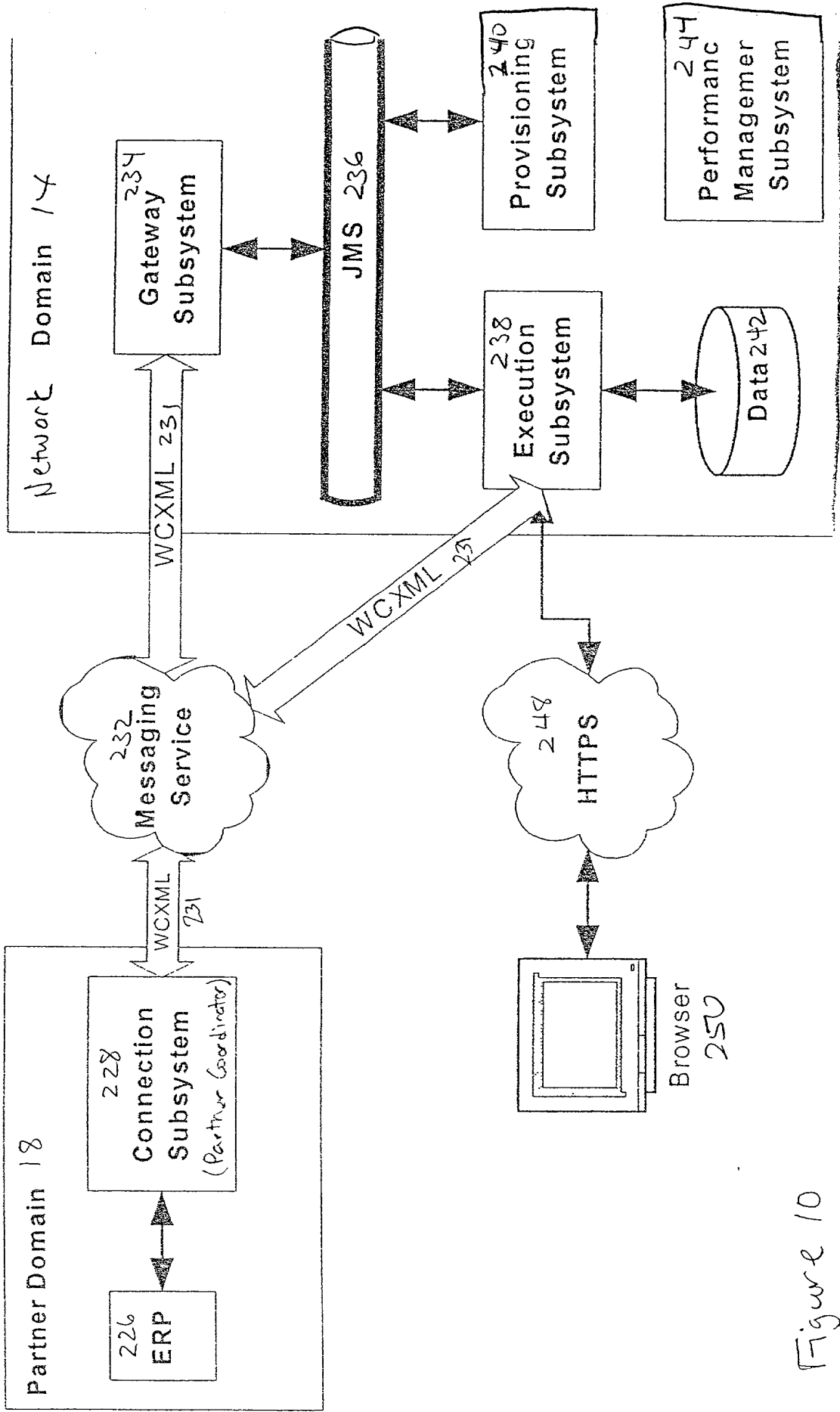


Figure 10

180 ✓

FIGURE 11

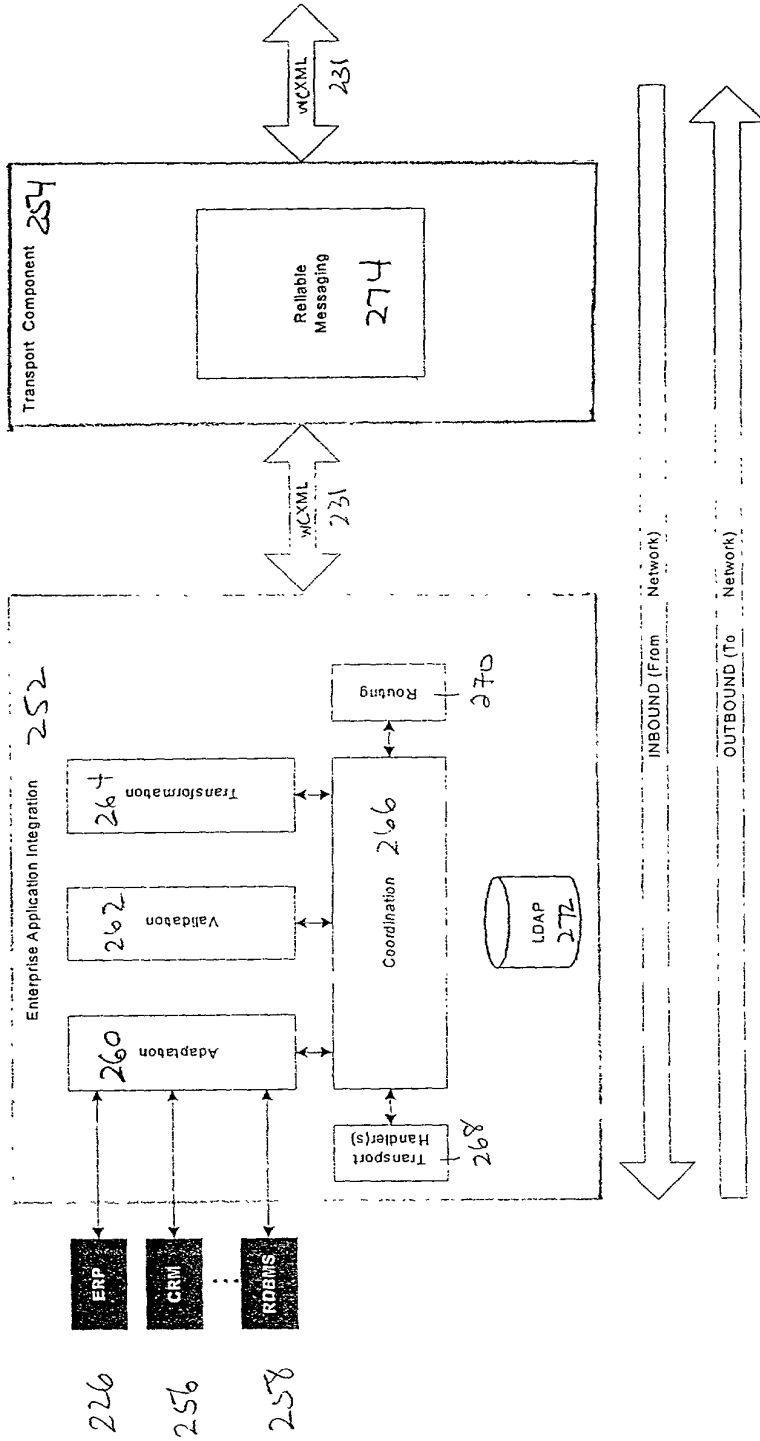


Figure 11

FOR "SOA" 234

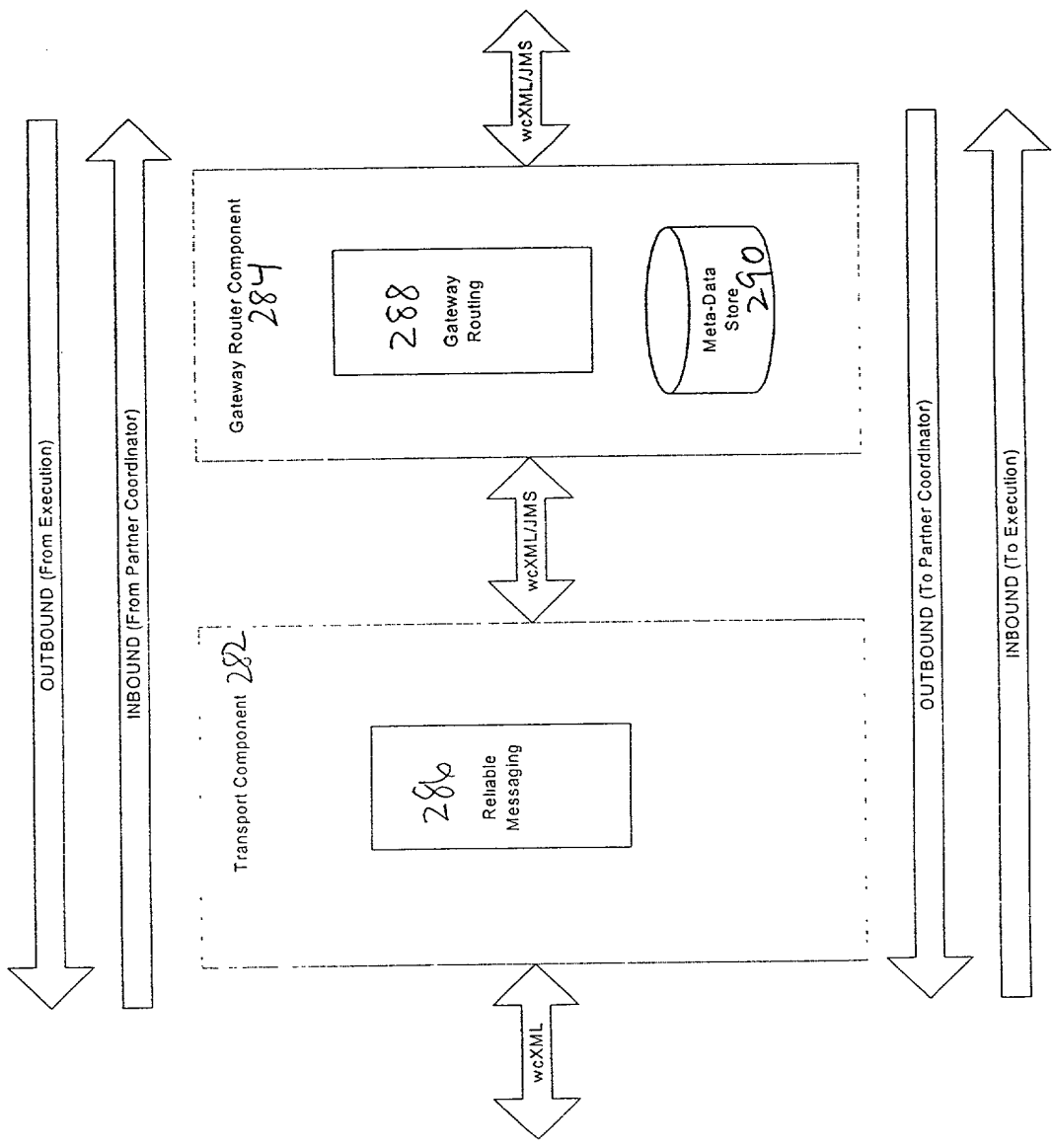


Figure 12

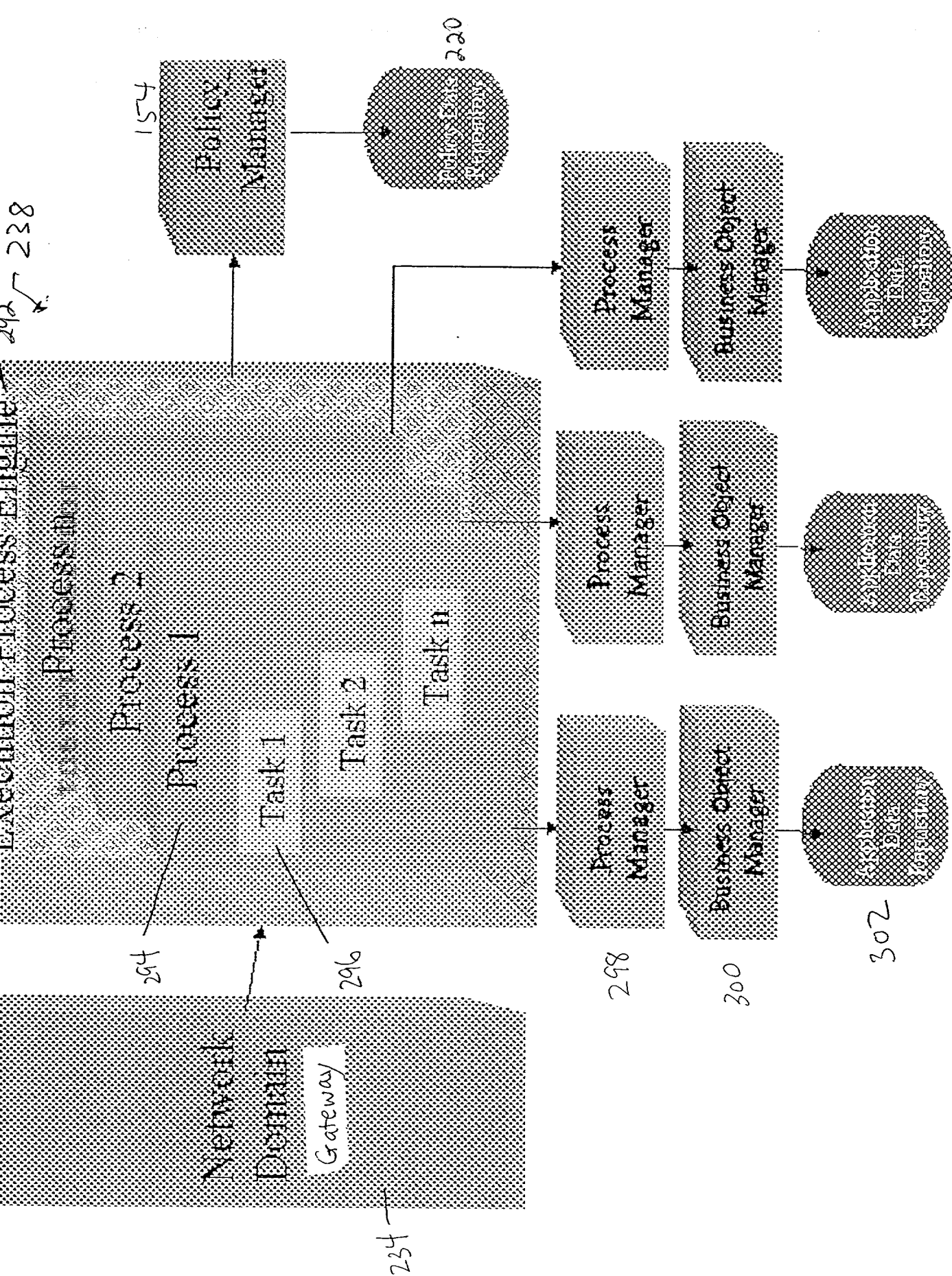
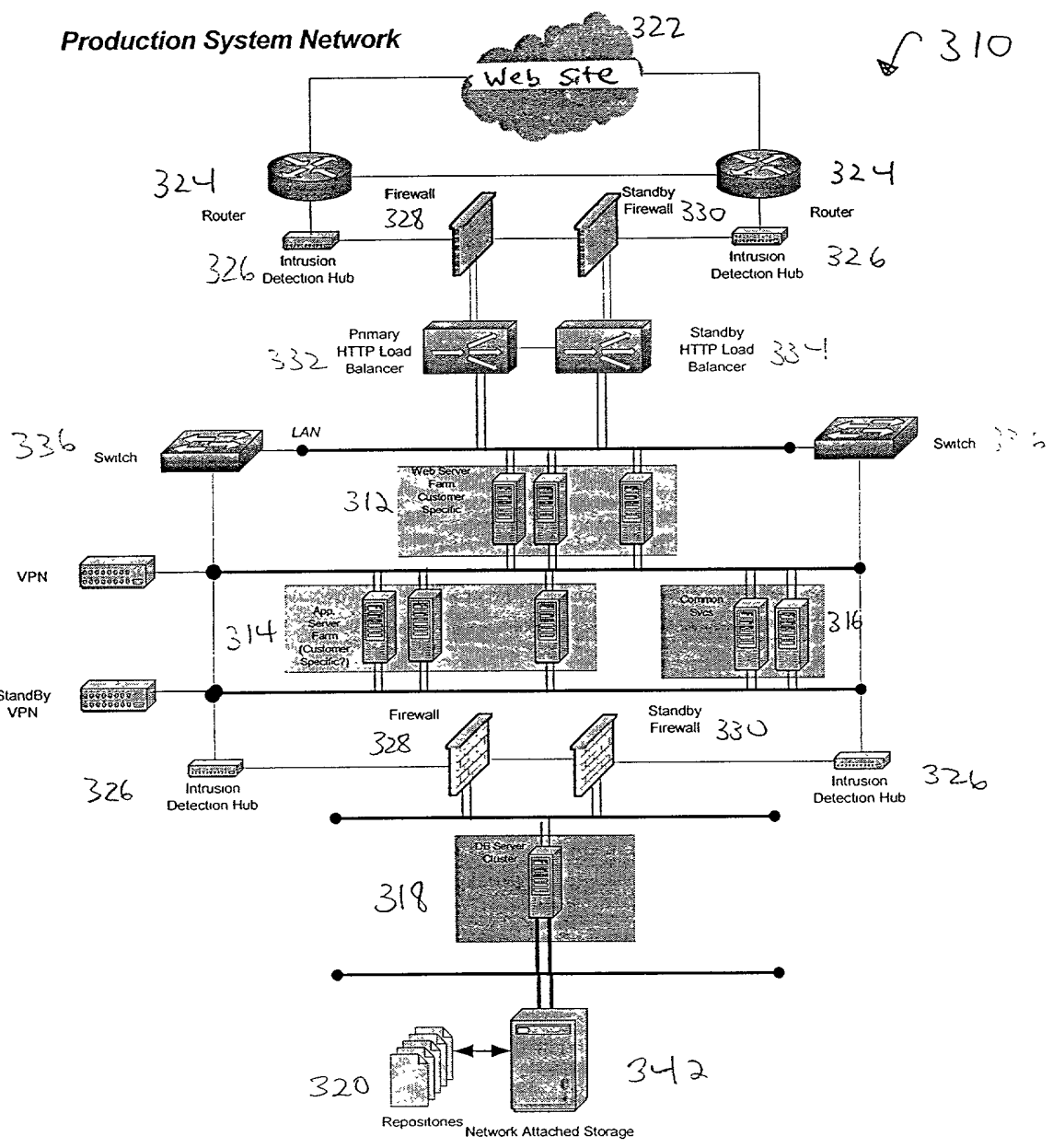


Figure 13

Production System Network



10027965-121901

Figure 14A

10027965-121901

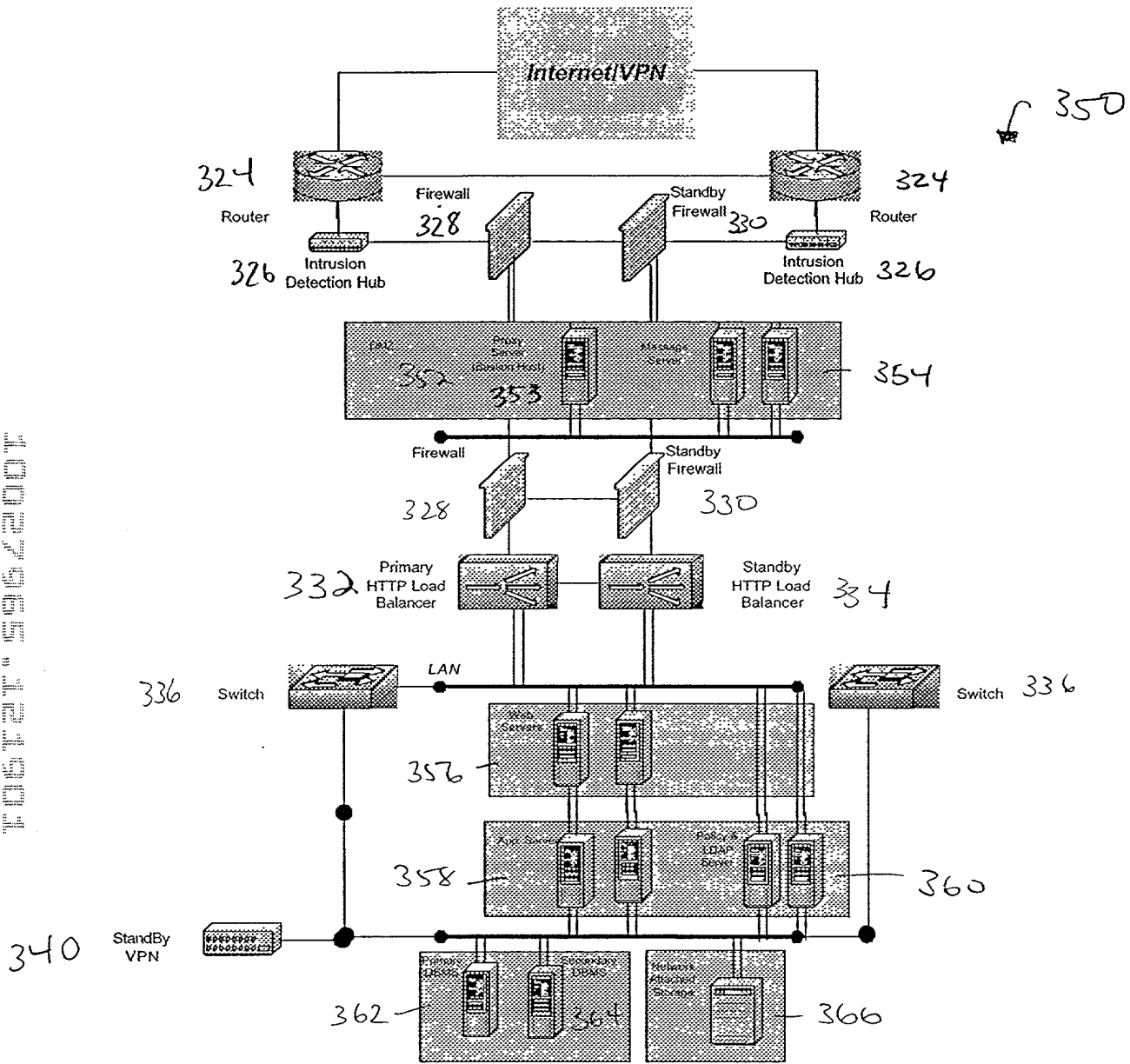


Figure 14B

↙ 370

Alerts ?

You have 5 Alerts [View](#)

Documentation ?

- Documentation
- WorldChain Service Documentation
- WorldChain Tools Documentation

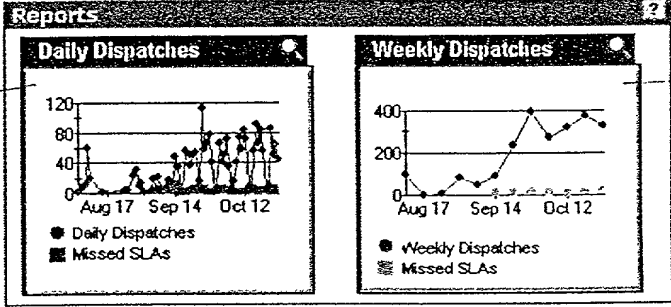
Tasks ?

- Transfer Inventory Between Locations
- Check Inventory Quantity
- Customer Master Inquiry
- Sales Order Inquiry
- Shipment Inquiry
- Carrier Inquiry
- More Tasks...

Depot Inventory Levels ?

Status	Order	Customer	Location	Value of Inventory	Value of Aged Inv.
●	213	Southern Hub	Houston, TX	\$901,546,000	\$45,201
	202	Florida Depot	Orlando, FL	\$420,445,000	\$52,990
●	213	Texas Depot	Dallas, TX	\$425,000	\$21,656
●	199	Georgia Depot	Atlanta, GA	\$561,010,000	\$66,000
●	213	West Hub	Phoenix, AZ	\$652,998,000	\$55,000
	202	Oregon Depot	Portland, OR	\$25,042	\$5,233
●	199	Ncal Depot	Belmont, CA	\$125,542,000	\$15,255

378



380

384

Figure 15

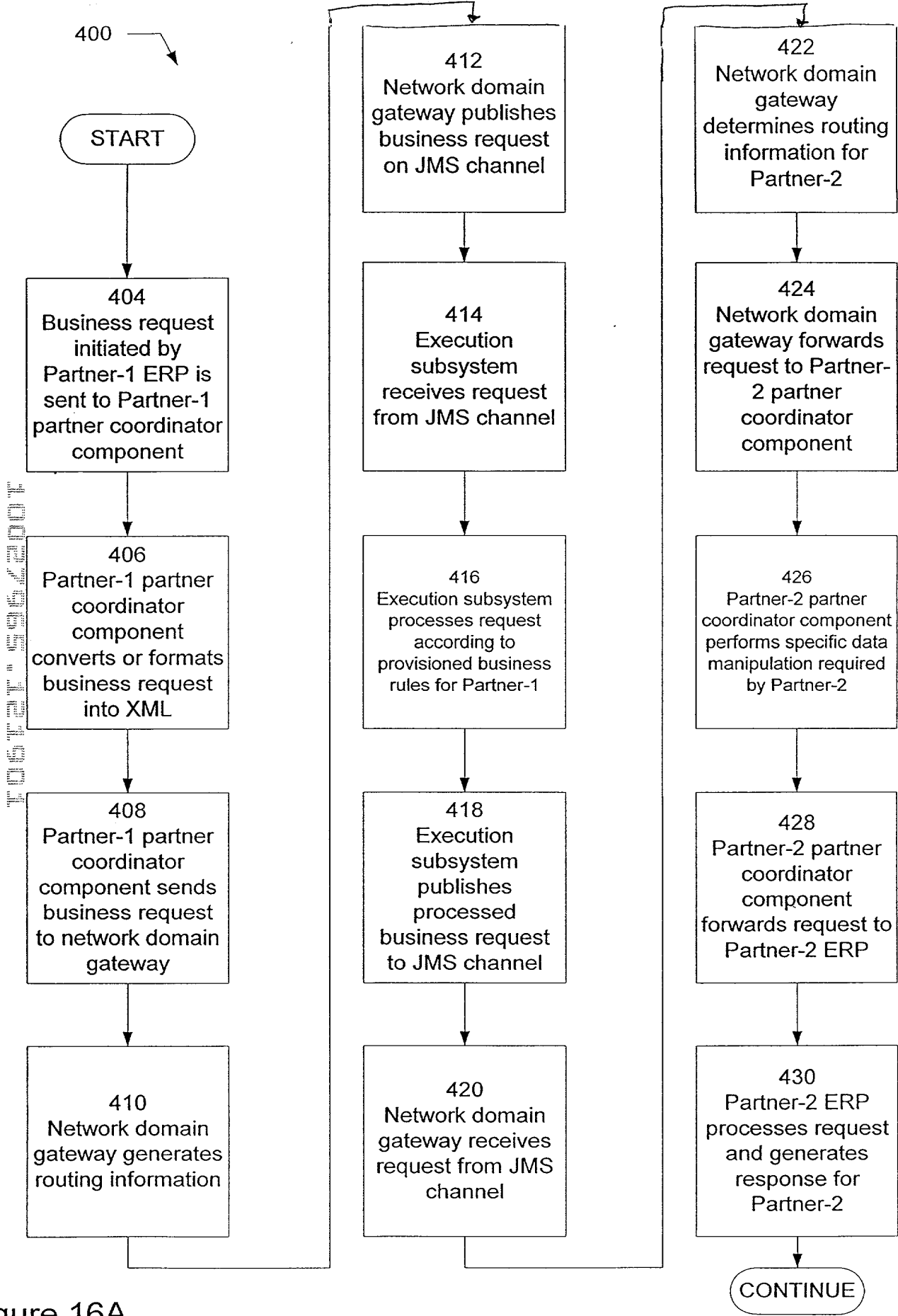


Figure 16A

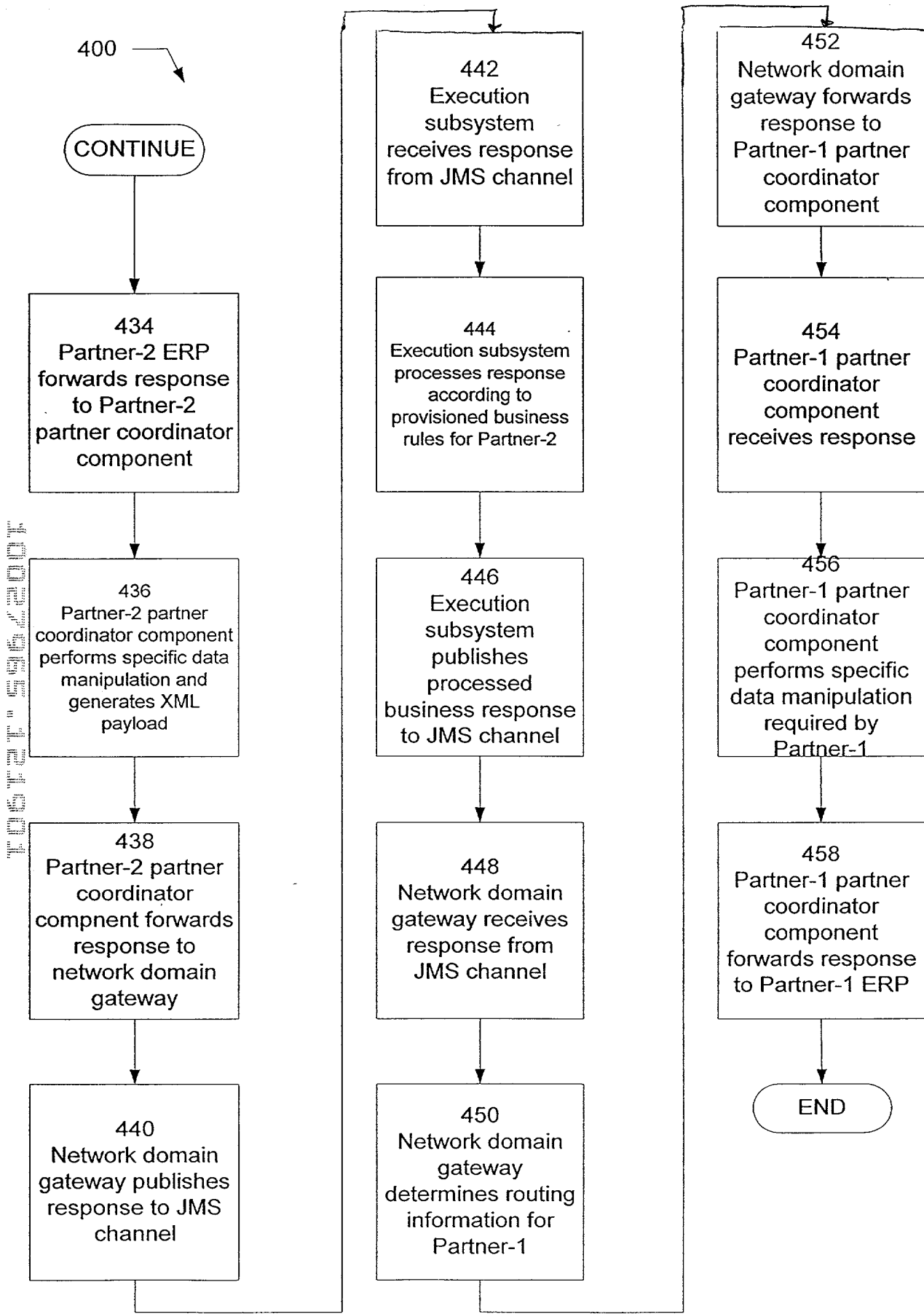


Figure 16B

FOR PUBLICATION

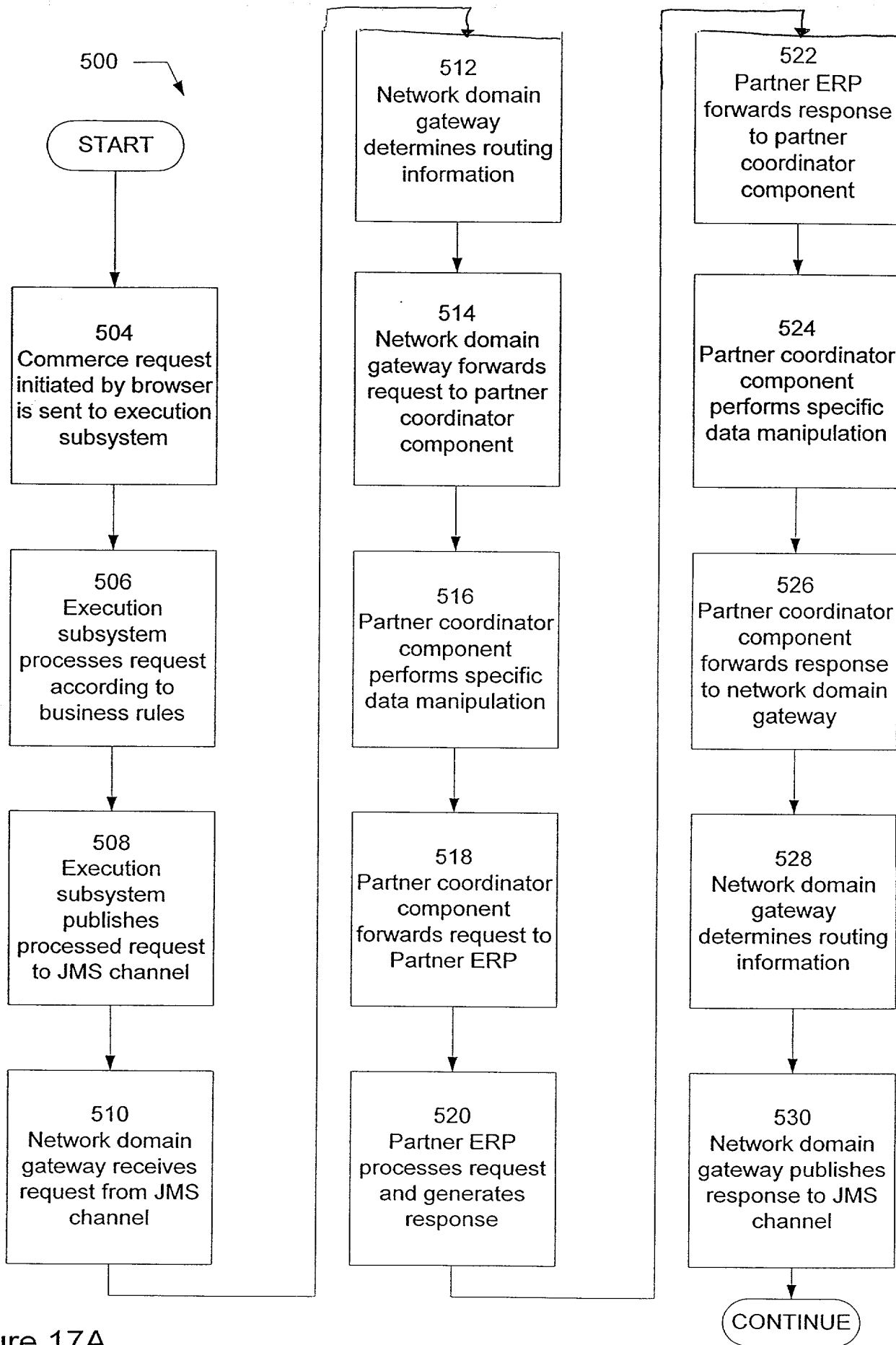


Figure 17A

500

CONTINUE

534
Execution
subsystem
receives response
from JMS channel

536
Execution
subsystem
processes
response
according to
business rules

538
Execution
subsystem
forwards response
to browser

END

FOR THE SYSTEM

Figure 17B

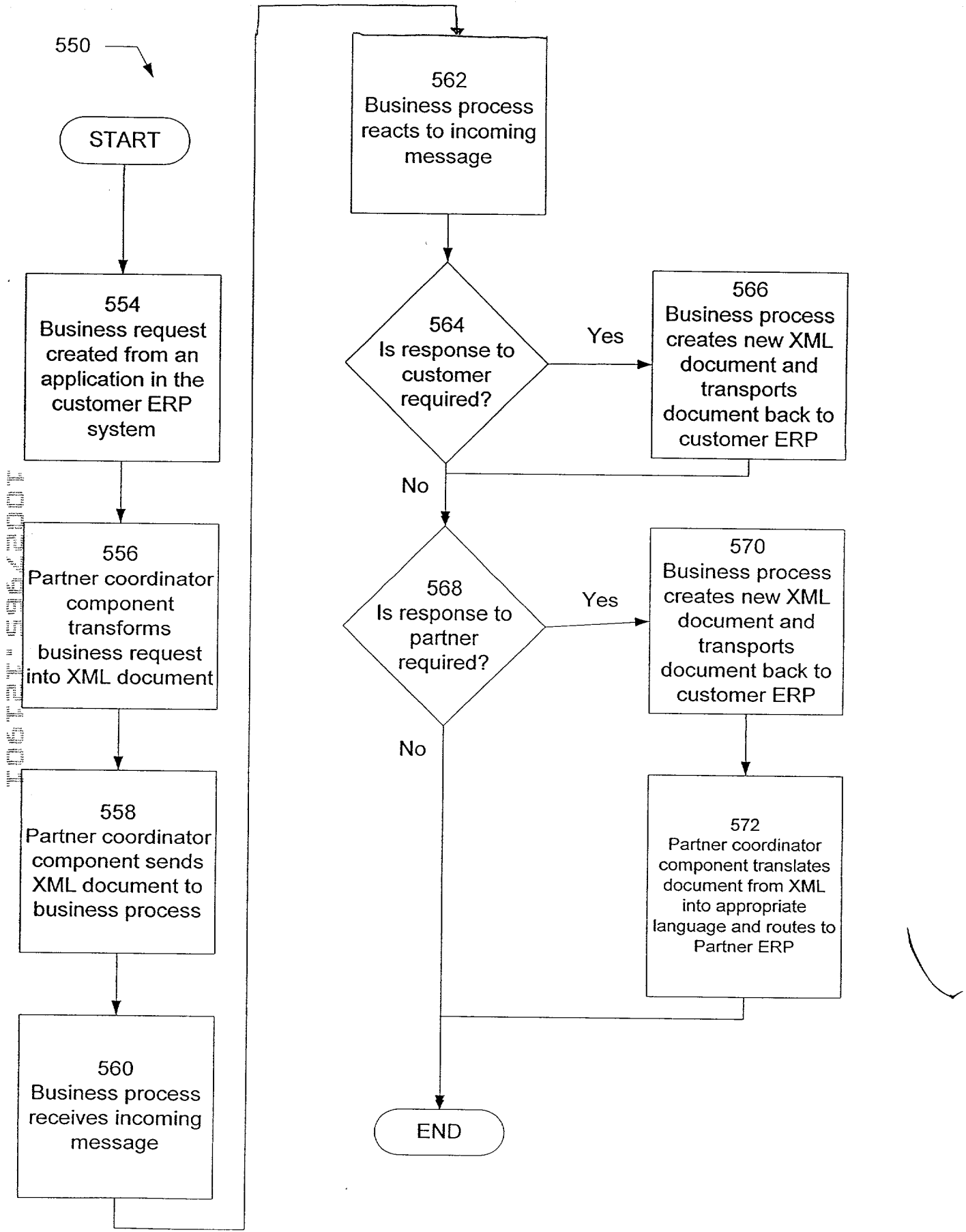


Figure 18